

Preliminary Performance Update

Lubbock Fire Pension Fund
June 30, 2017



Lubbock Fire Pension Fund

Total Fund

Market Performance

As of June 30, 2017

Name	Major Benchmark Returns					
	Periods Ending June 30, 2017					
	Jun-17	YTD	1 Yr	3 Yrs	5 Yrs	10 Yrs
US Equity						
S&P 500	0.6	9.3	17.9	9.6	14.6	7.2
Russell 3000	0.9	8.9	18.5	9.1	14.6	7.3
Russell 3000 Value	1.8	4.3	16.2	7.3	13.9	5.6
Russell 3000 Growth	0.0	13.7	20.7	10.8	15.2	8.8
S&P 400 MidCap	1.6	6.0	18.6	8.5	14.9	8.6
Russell 2000	3.5	5.0	24.6	7.4	13.7	6.9
International Equity						
MSCI ACWI	0.5	11.5	18.8	4.8	10.5	3.7
MSCI ACWI ex USA	0.3	14.1	20.5	0.8	7.2	1.1
MSCI EAFE	-0.2	13.8	20.3	1.1	8.7	1.0
MSCI EAFE Small Cap	0.0	16.7	23.2	5.6	12.9	3.4
MSCI Emerging Markets	1.0	18.4	23.7	1.1	4.0	1.9
Hedge Funds						
HFRI Fund Weighted Composite Index	--	--	--	--	--	--
HFRI Fund of Funds Composite Index	--	--	--	--	--	--
Inflation Strategies						
MSCI US REIT	2.0	2.0	-3.1	6.8	8.0	4.5
Alerian MLP TR USD	-0.6	-2.7	0.4	-11.2	1.8	5.7
Bloomberg Commodity Index TR USD	-0.2	-5.3	-6.5	-14.8	-9.2	-6.5
Fixed Income						
BBgBarc US Aggregate TR	-0.1	2.3	-0.3	2.5	2.2	4.5
BBgBarc US Govt TR	-0.2	1.9	-2.2	2.0	1.3	3.9
BBgBarc US Credit TR	0.3	3.7	1.8	3.4	3.7	5.6
BBgBarc US Mortgage TR	-0.4	1.3	-0.1	2.2	2.0	4.3
BBgBarc US High Yield TR	0.1	4.9	12.7	4.5	6.9	7.7
Credit Suisse Leveraged Loans	-0.1	2.0	7.5	3.5	4.8	4.2
BBgBarc Emerging Markets TR	-0.2	5.1	5.6	4.5	5.3	7.1
BBgBarc US TIPS TR	-0.9	0.9	-0.6	0.6	0.3	4.3
T-Bills						
91 Day T-Bills	0.1	0.4	0.5	0.2	0.2	0.4


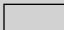


The MSCI information provided herein is the exclusive property of MSCI Inc. ("MSCI"), is provided "AS IS," and may not be reproduced, disseminated or used to create any financial products or indices. In no event shall MSCI or its affiliates or providers have any liability to any person related to this information. Russell Investment Group is the source and owner of the Russell Index data contained or reflected in this material and all trademarks and copyrights related thereto. The material may contain confidential information and unauthorized use, disclosure, copying, dissemination or redistribution is strictly prohibited. This is an Ellwood Associates presentation of the data. Russell Investment Group is not responsible for the formatting or configuration of this material or for any inaccuracy in presentation thereof.

Asset Allocation vs. Target Policy

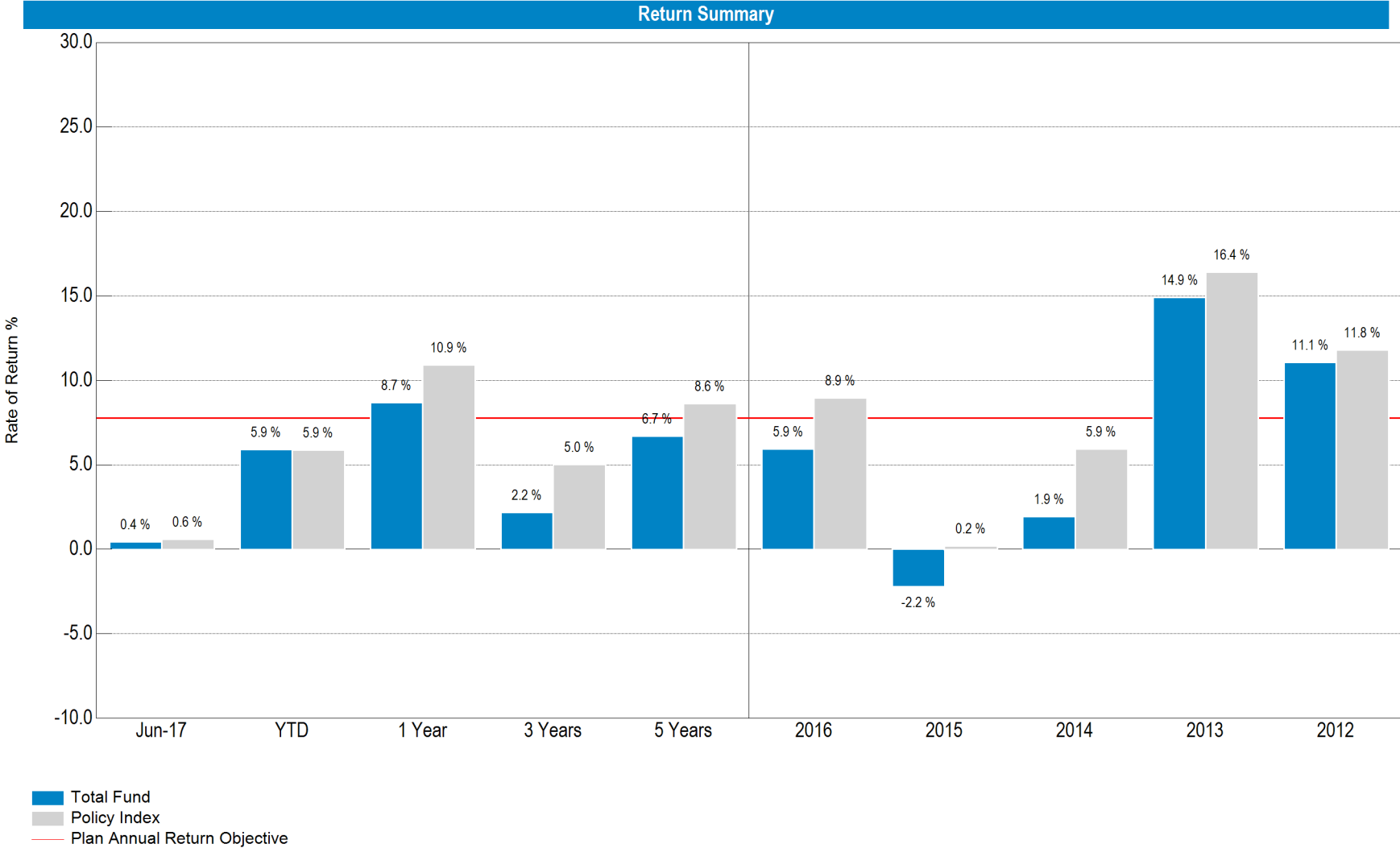
As of June 30, 2017

Asset Allocation vs. Target

As Of June 30, 2017

	Policy Range	Policy	%	Current	%	Difference*	%
 Public Equity	35.0% - 50.0%	\$82,947,816	45.0%	\$34,063,866	18.5%	-\$48,883,949	-26.5%
Vanguard Total Stock Market		\$27,649,272	15.0%	\$6,002,415	3.3%	-\$21,646,857	-11.7%
Vanguard Total International Stock		\$18,432,848	10.0%	\$4,954,667	2.7%	-\$13,478,181	-7.3%
Dodge & Cox Global Stock		\$18,432,848	10.0%	\$5,041,985	2.7%	-\$13,390,863	-7.3%
GQG Partners		\$18,432,848	10.0%	\$18,064,800	9.8%	-\$368,048	-0.2%
 Fixed Income	20.0% - 40.0%	\$46,082,120	25.0%	\$39,175,177	21.3%	-\$6,906,943	-3.7%
Garcia Hamilton		\$27,649,272	15.0%	\$29,491,306	16.0%	\$1,842,034	1.0%
Blackstone BREIF II		\$9,216,424	5.0%	\$9,683,871	5.3%	\$467,447	0.3%
 Alternatives	10.0% - 40.0%	\$55,298,544	30.0%	\$15,589,123	8.5%	-\$39,709,421	-21.5%
CDK Multifamily				\$3,676,427	2.0%		
CBRE Capital Partners				\$33,294	0.0%		
Blackstone Tactical Opps				\$2,416,964	1.3%		
Goldman Sach Private Eq Partners				\$2,902,003	1.6%		
W.R. Huff Mgmt Co				\$6,560,434	3.6%		
 Cash	0.0% - 5.0%	\$0	0.0%	\$95,500,314	51.8%	\$95,500,314	51.8%
Cash				\$1,663,361	0.9%		
Miscellaneous Cash				\$93,836,953	50.9%		
Total		\$184,328,479	100.0%	\$184,328,479	100.0%		

*Difference between Policy and Current Allocation



* Total Fund returns prior to January 2017 were provided by Graystone Consulting.

As of June 30, 2017

Cash Flow Summary

	Month Ending June 30, 2017			
	Beginning Market Value	Net Cash Flow	Net Investment Change	Ending Market Value
Vanguard Total Stock Market	\$0	\$6,044,030	-\$41,615	\$6,002,415
Vanguard Total International Stock	\$0	\$5,000,000	-\$45,333	\$4,954,667
Dodge & Cox Global Stock	\$0	\$5,000,000	\$41,985	\$5,041,985
GQG Partners	\$0	\$18,000,000	\$64,800	\$18,064,800
Luther King Capital Management-Equity	\$64,445,689	-\$65,412,998	\$967,309	\$0
Westwood Management Corp	\$27,841,488	-\$27,929,384	\$87,896	\$0
Garcia Hamilton	\$0	\$29,437,682	\$53,624	\$29,491,306
Blackstone BREIF II	\$9,683,871	\$0	\$0	\$9,683,871
Luther King Capital Management-Fixed Income	\$30,664,464	-\$30,438,444	-\$226,020	\$0
CDK Multifamily	\$3,679,563	-\$3,136	\$0	\$3,676,427
CBRE Capital Partners	\$33,294	\$0	\$0	\$33,294
Blackstone Tactical Opps	\$2,352,242	\$64,722	\$0	\$2,416,964
Goldman Sach Private Eq Partners	\$3,113,619	-\$211,616	\$0	\$2,902,003
W.R. Huff Mgmt Co	\$6,560,434	\$0	\$0	\$6,560,434
ACL Alternative Fund	\$9,107,481	-\$9,114,284	\$6,803	\$0
Cash	\$25,820,210	-\$24,159,055	\$2,205	\$1,663,361
Miscellaneous Cash	\$0	\$93,836,953	\$0	\$93,836,953
Total	\$183,302,355	\$114,470	\$911,654	\$184,328,479

As of June 30, 2017

Cash Flow Summary

	YTD Ending June 30, 2017			
	Beginning Market Value	Net Cash Flow	Net Investment Change	Ending Market Value
Vanguard Total Stock Market	--	\$6,044,030	-\$41,615	\$6,002,415
Vanguard Total International Stock	--	\$5,000,000	-\$45,333	\$4,954,667
Dodge & Cox Global Stock	--	\$5,000,000	\$41,985	\$5,041,985
GQG Partners	--	\$18,000,000	\$64,800	\$18,064,800
Luther King Capital Management-Equity	\$59,474,732	-\$65,446,168	\$5,971,436	\$0
Westwood Management Corp	\$27,126,835	-\$27,927,781	\$800,946	\$0
Lazard Intl Eq Select with Emerging Mkts	\$12,339,345	-\$13,834,116	\$1,494,772	--
WCM Investment Management	\$9,412,336	-\$11,116,115	\$1,703,779	--
Garcia Hamilton	--	\$29,437,682	\$53,624	\$29,491,306
Blackstone BREIF II	\$9,250,394	-\$107,322	\$540,799	\$9,683,871
Luther King Capital Management-Fixed Income	\$30,703,955	-\$30,950,386	\$246,431	\$0
CDK Multifamily	\$3,836,761	-\$154,556	-\$5,778	\$3,676,427
CBRE Capital Partners	\$39,350	\$0	-\$6,056	\$33,294
Blackstone Tactical Opps	\$2,204,106	\$155,418	\$57,441	\$2,416,964
Goldman Sach Private Eq Partners	\$3,288,501	-\$386,498	\$0	\$2,902,003
W.R. Huff Mgmt Co	\$6,639,058	\$0	-\$78,624	\$6,560,434
ACL Alternative Fund	\$9,501,294	-\$9,114,284	-\$387,010	\$0
Cash	\$2,317,611	-\$659,677	\$5,426	\$1,663,361
Miscellaneous Cash	--	\$93,836,953	\$0	\$93,836,953
Total	\$176,134,279	-\$2,222,821	\$10,417,022	\$184,328,479

The MSCI information provided herein is the exclusive property of MSCI Inc. ("MSCI"), is provided "AS IS," and may not be reproduced, disseminated or used to create any financial products or indices. In no event shall MSCI or its affiliates or providers have any liability to any person related to this information. Russell Investment Group is the source and owner of the Russell Index data contained or reflected in this material and all trademarks and copyrights related thereto. The material may contain confidential information and unauthorized use, disclosure, copying, dissemination or redistribution is strictly prohibited. This is an Ellwood Associates presentation of the data. Russell Investment Group is not responsible for the formatting or configuration of this material or for any inaccuracy in presentation thereof.

Performance Summary

As of June 30, 2017

	Market Value (\$)	% of Portfolio	Ending June 30, 2017						
			1 Mo (%)	QTD (%)	YTD (%)	1 Yr (%)	3 Yrs (%)	5 Yrs (%)	10 Yrs (%)
Total Fund	184,328,479	100.0	0.4	2.1	5.9	8.7	2.2	6.7	4.8
<i>Policy Index</i>			0.6	2.4	5.9	10.9	5.0	8.6	5.4
Total Public Equity	34,063,866	18.5	1.0	3.3	9.3	--	--	--	--
<i>MSCI ACWI</i>			0.5	4.3	11.5	18.8	4.8	10.5	3.7
Vanguard Total Stock Market	6,002,415	3.3							
Vanguard Total International Stock	4,954,667	2.7							
Dodge & Cox Global Stock	5,041,985	2.7							
GQG Partners	18,064,800	9.8							
Total Fixed Income	39,175,177	21.3	-0.4	0.9	2.1	--	--	--	--
<i>BBgBarc US Aggregate TR</i>			-0.1	1.4	2.3	-0.3	2.5	2.2	4.5
Garcia Hamilton	29,491,306	16.0							
Blackstone BREIF II	9,683,871	5.3	0.0	2.9	5.9	10.9	--	--	--
<i>BBgBarc US Aggregate TR</i>			-0.1	1.4	2.3	-0.3	2.5	2.2	4.5
Total Alternatives	15,589,123	8.5	0.0	-0.4	-1.6	--	--	--	--
CDK Multifamily	3,676,427	2.0	0.0	0.0	-0.2	-31.0	-5.4	-4.1	-2.2
CBRE Capital Partners	33,294	0.0	0.0	0.0	-15.4	-6.6	-41.9	-20.5	--
Blackstone Tactical Opps	2,416,964	1.3	0.0	0.0	2.5	12.3	--	--	--
<i>13% Return Target</i>			1.0	3.1	6.3	13.0	13.0	13.0	13.0
Goldman Sach Private Eq Partners	2,902,003	1.6	0.0	0.0	0.0	9.2	7.4	12.3	--
<i>13% Return Target</i>			1.0	3.1	6.3	13.0	13.0	13.0	13.0
W.R. Huff Mgmt Co	6,560,434	3.6	0.0	0.0	-1.2	-4.9	-4.1	-3.3	6.9
<i>13% Return Target</i>			1.0	3.1	6.3	13.0	13.0	13.0	13.0

Returns prior to January 2017 provided by Graystone Consulting.

Note: Blackstone BREIF II value carried from previous month. All Alternative funds represent most current valuation +/- any cash flows.

As of June 30, 2017

	Market Value (\$)	% of Portfolio	Ending June 30, 2017						
			1 Mo (%)	QTD (%)	YTD (%)	1 Yr (%)	3 Yrs (%)	5 Yrs (%)	10 Yrs (%)
Total Cash	95,500,314	51.8	0.0	0.1	0.2	--	--	--	--
<i>91 Day T-Bills</i>			<i>0.1</i>	<i>0.2</i>	<i>0.4</i>	<i>0.5</i>	<i>0.2</i>	<i>0.2</i>	<i>0.4</i>
Cash	1,663,361	0.9	0.0	0.1	0.2	--	--	--	--
<i>91 Day T-Bills</i>			<i>0.1</i>	<i>0.2</i>	<i>0.4</i>	<i>0.5</i>	<i>0.2</i>	<i>0.2</i>	<i>0.4</i>
Miscellaneous Cash	93,836,953	50.9	0.0	--	--	--	--	--	--

Returns prior to January 2017 provided by Graystone Consulting.

Time and Money Weighted Returns

Total Fund	Jun-17	YTD
Time Weighted	0.44%	5.90%
Money Weighted	0.44%	5.80%

Summary of Cash Flows

	Last Month	Year-To-Date
Beginning Market Value	\$183,302,355	\$176,134,279
Net Cash Flow	\$114,470	-\$2,222,821
Net Investment Change	\$911,654	\$10,417,022
Ending Market Value	\$184,328,479	\$184,328,479
Time Weighted Return	0.44%	5.90%
Money Weighted Return	0.44%	5.80%

As of June 30, 2017

Benchmark History

As of June 30, 2017

Total Fund		
6/1/2015	Present	Russell 3000 28% / Russell 2500 12% / MSCI EAFE 13% / BBgBarc US Aggregate TR 27% / NCREIF-ODCE Net 5% / 13% Return Target 9% / Bloomberg Commodity Index TR USD 6%
1/1/2012	5/31/2015	Russell 3000 28% / Russell 2500 12% / MSCI EAFE 13% / BBgBarc US Aggregate TR 27% / NCREIF Property Index 8% / 13% Return Target 6% / Bloomberg Commodity Index TR USD 6%
5/1/2008	12/31/2011	Russell 3000 40% / MSCI EAFE 13% / BBgBarc US Aggregate TR 27% / NCREIF Property Index 8% / 13% Return Target 6% / Bloomberg Commodity Index TR USD 6%
11/1/2007	4/30/2008	Russell 3000 41% / MSCI EAFE 13% / BBgBarc US Aggregate TR 32% / NCREIF Property Index 8% / 13% Return Target 6%
1/1/2007	10/31/2007	Russell 3000 54% / BBgBarc US Aggregate TR 32% / NCREIF Property Index 8% / 13% Return Target 6%
11/1/2005	12/31/2006	Russell 3000 60% / BBgBarc US Aggregate TR 32% / NCREIF Property Index 8%
1/1/2001	10/31/2005	Russell 3000 60% / BBgBarc US Aggregate TR 40%